



Application Note

WEP Encryption Setting Application

For SP906GL and SP918GL series

WEP Encryption Implementation:

With WEP Encryption, deploy the AP and wireless adapter encryption method for client access the WLAN in security.

1. DESCRIPTION

When the client accesses the AP in open system and might be sniffed by hacker. By the reason, client and AP could use the WEP encryption method to secure the WLAN environment. The application note describes the procedure how to configure it step by step.

2. CONFIGURATION

2.1. Enable the WEP function on SP916GL.

Step1. Enter the Wireless console item shown as the below:



Step2. Choice one kind authentication type:

There are five options: Open System; Shared Key; WPA; WPA-PSK and 802.1X. WEP: Enable or Disabled.

Pls used the “Open System” or “Shared Key” mode and enable the WEP.

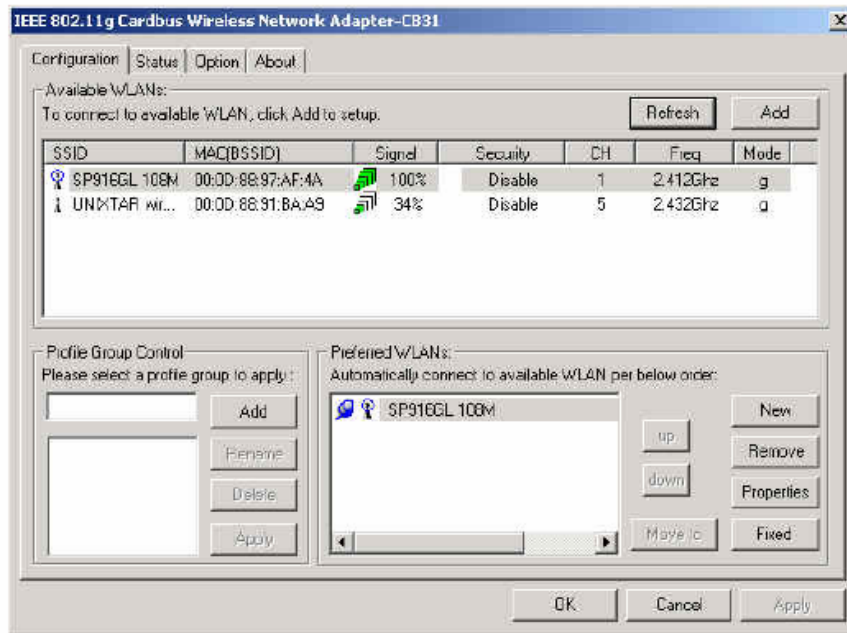
Step3. Select WEP Key - 64 or 128 bits from the drop-down list.

Step4. Enable you to create an encryption scheme for Wireless LAN transmissions. Manually enter a set of values for each key. (Note: The character must the same as you type on wireless adapter)

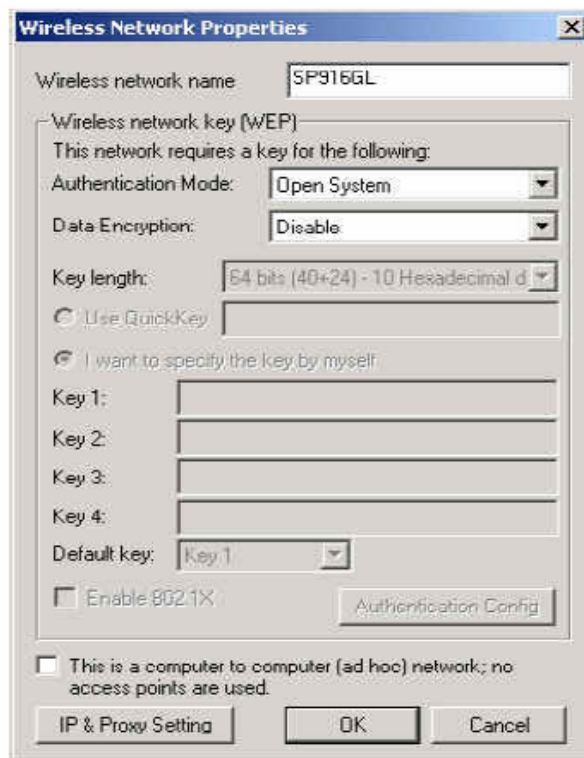
Step5. Click “Apply” and restart the SP916GL to complete the security configuration.

2.2. Enable the WEP function on SP906GL.

Step1. Open the utility of SP906GL and you could see the SP916GL in Available WLANs.



Step2. You may connect to by first selecting the WLAN (it will appear highlighted) and then clicking on Add. When you do so a screen like the one below will pop up:



- Step3. You may also enter wireless network encryption keys by checking Network Authentication (Shared mode) or Data encryption (WEP enabled).
- Step4. Enter up to four keys of length 10 or 25 hexadecimal digits (Note: It must the same as you type in SP916GL)